



Burnable Garbage

Disposal

Please put out the garbage bags by **7:00 a.m.** in front of your house or the specified collection site, on your collection days. Place the bags in a position that is easily visible from the street.

Collected twice a week. Use only designated garbage bags for Koga City.

Purchase city-designated garbage bags at stores such as supermarkets and convenience stores. Put garbage in the designated bag and make sure to tie the bag before disposal.

*A list of stores selling the garbage bags is shown on the city's website.⇒ <http://www.city.koga.fukuoka.jp/cityhall/work/kankyo/020.php>



City-designated garbage bags



Large
45ℓ



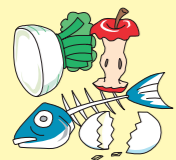
Small
30ℓ



Mini
20ℓ

Applicable garbage

Food garbage (vegetable scraps/shells)



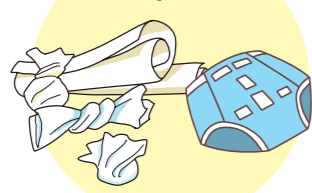
Trees and plants



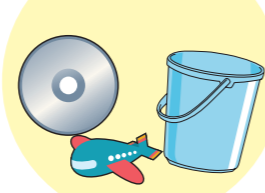
Clothes



Papers



Plastics



Garbage that does not fit into the city-designated garbage bags must be disposed of as oversized garbage. → P4

*Be sure to completely drain liquid from food garbage.



Recyclable Garbage

Collected once a month by district.

*Items larger than the containers (oversized garbage) cannot be collected as recyclable garbage. → P4
*The collection site and time differ by district, so check with the Environment Division.

| Categories for sorting | Examples of items | Points to note | Collection method |
|--|-------------------|---|---|
| Bottles (びん) | | <ul style="list-style-type: none"> Empty and rinse before disposal. Remove caps and rings if possible. No need to remove labels. | Container |
| Glass (ガラス) | | <ul style="list-style-type: none"> Empty and rinse before disposal. Remove all non-glass parts if possible. | Container |
| Paper cartons | | <ul style="list-style-type: none"> Rinse, cut open, and dry. ⚠ Items that have aluminum coating inside or are soiled must be disposed of as "burnable garbage." → P2 | Container |
| Pottery (陶磁器) | | <ul style="list-style-type: none"> Remove stains before disposal. Remove parts of a different material such as metal, plastic, etc. | Container 30cm×40cm×30cm (length x width x height) |
| Spray cans (スプレー缶) | | <ul style="list-style-type: none"> Empty before disposal. | Container |
| Household batteries (including button cells, rechargeable dry batteries, and lithium batteries) (乾電池) | | <ul style="list-style-type: none"> Remove paper or wraps before disposal. ⚠ Batteries for cars, motorcycles, etc. cannot be disposed of. → P4 | Container |
| Metals (金属混合物) | | <ul style="list-style-type: none"> Make sure to empty all metal containers before disposal. Remove all non-metal parts if possible. ⚠ Items too big to fit into a container must be disposed of as "oversized garbage." → P4 ⚠ "Garbage unable to be disposed of by the city" such as television, computers must be disposed of by the designated disposal method. → P4 | Container (2 types) 30cm×40cm×30cm |
| Fluorescent tubes (蛍光管) | | <ul style="list-style-type: none"> Dispose only in unbroken condition. ⚠ Items that are broken → "Glass" and "Metals" | Container (2 types) 25cm×15cm×100cm |
| Plastic PET bottles | | <ul style="list-style-type: none"> Empty and rinse before disposal. Do not compress. If soiled, dispose of as "burnable garbage." → P2 ⚠ Remove caps, labels, etc. → "Plastic containers/packaging." | Eco-friendly bag |
| Plastic containers/packaging | | <ul style="list-style-type: none"> Remove stains, rinse, and dry. Remove all non-plastic parts (paper stickers, labels, etc.) if possible. If soiled, dispose of as "burnable garbage." → P2 ⚠ Plastic items other than containers/packaging (products themselves such as toys) → "Burnable Garbage" → P2 | Eco-friendly bag |
| Packing material (Styrofoam) (梱包材) | | <ul style="list-style-type: none"> Remove stains, rinse, and dry. Break into pieces about 20cm in size before disposal. With soil → "Burnable Garbage" → P2 | Eco-friendly bag |
| Beverage cans | | <ul style="list-style-type: none"> Empty and rinse before disposal. Do not compress. Dispose of metal cans with caps on. ⚠ Cans that contained a substance other than drinks, cans that are completely crushed, and cans that are heavily soiled or corroded → "Metals" | Eco-friendly bag |